

# LA SOUFRIÈRE VOLCANO, ST. VINCENT

## SITUATION REPORT No. 31

AS OF 10:00 PM ON 25 MAY, 2021

### Volcanic activity remains low at La Soufrière, St. Vincent

A scientific update by the UWI Seismic Research Centre on 24 May 2021 reported the following:

- Seismic activity at La Soufrière, St Vincent has remained low since the tremor associated with the explosion and ash venting on 22 April.
- In the last 24 hours, seismic activity was limited to a few long-period, hybrid and volcano-tectonic earthquakes.
- When the cloud is high enough, there is persistent steaming observable from the observatory.
- Thermal anomalies indicating high temperatures inside the new crater continue to be detected by the NASA FIRMS alert system. These have been persistent since the 22 April explosion.
- Gas measurements on May 18 yielded an average SO<sub>2</sub> flux of 633 tons per day.
- The volcano continues to be in a state of unrest. Escalation in activity can take place with little or no warning.
- The volcano is at alert level ORANGE



Photo: Nadia Huggins

*Caption: Reworked deposits along the Leeward coast.  
Photo: Nadia Huggins*

**ALERT LEVEL ORANGE**

## Updates from Impacted CDEMA Participating State

**NEMO EMERGENCY: (784) 458-6366**

**nemosvg@gov.vc**

**NEMO HOTLINE: (784) 526-3000**

Situation Report by the National Emergency Management Organisation (NEMO) issued on 24 May, 2021 stated the following:

- On Thursday May, 20, 2021, the Hon. Dr. Ralph E. Gonsalves, Prime Minister of St. Vincent and the Grenadines made the following announcements for persons displaced from the orange and some parts of the red volcano hazard zones to return home:
  - Persons who evacuated from the orange zone from Petit Bordel to Gordon Yard on the Leeward side of the island and up to Mt. Young Bridge on the Windward side of the island, to return home by May 25, 2021.
  - Persons who evacuated from the areas of Grand Sable up to Langley Park Georgetown in the red volcano hazard zone, to return home by June 01, 2021.
  - The communities of Chateaubelair, Fitz-Hughes and all other communities in the red volcano hazard zone from Rabacca to Fancy remain restricted areas and residents will not be granted permission to visit these areas until further notice.
  - Access to the Red Volcanic Hazard Zone is still limited to government approved essential work only. Conditions remain hazardous and the potential for injury remains. Residents are also asked to desist from visiting the La Soufriere Volcano.
- School resumed on May 17, 2021 for students scheduled to write external examinations this year.

### THE FOLLOWING WAS REPORTED BY NEMO ON 24 MAY, 2021:



- 80 public shelters with 3,959 evacuees and 911 volunteers
- 18,350 persons in private homes with 2,127 persons from private homes registered to feed at shelters
- 40 families; 223 displaced persons; 17 pregnant women registered in hotel accommodations
- 5,324 displaced vulnerable persons
- These numbers continue to fluctuate as people leave to clean their homes and return
- NEMO continues to coordinate the Shelter Management Operation
- NEMO met the WFP on Monday 17th May, 2021 to discuss the changes in the supply process and training to facilitate this transition
- NEMO explored the use of the CDEMA Logistics System, currently operating at the Arnos Vale Logistics Hub, to further improve the efficiency of procuring relief items for the shelters.

## Coordination of the Regional Response Mechanism (RRM)

- The COST team will continue to provide direct support to the NEMO operations, particularly the National Emergency Operations Centre (NEOC), coordination and Logistics management. CDEMA Logistician Mr. Kevon Campbell joined the logistics team on 24 May, 2021.
- The CDRU continues to provide support towards the management of the Arnos Vale Hub. With the support of the CDRU, the CDEMA Logistics System (CLS) was operationalised on 15 May, 2021.
- The public is being advised to coordinate relief supplies with their National Disaster Offices in country, cash donations are strongly recommended and banking details are provided on page 7.
- For further information please contact the Regional Coordination Center via [rcuser@cdema.org](mailto:rcuser@cdema.org).



Watch a short clip on the Arnos Vale Logistics Hub via  
<https://www.facebook.com/cdemacu1/videos/2921229668152337>  
 Video by World Food Programme (WFP)



## WOMEN AND CHILDREN

- The United Nations Population Fund submitted a Gender assessment Report to the Government of St. Vincent and the Grenadines.
- Suitable hotel accommodation has been arranged for pregnant women and their families and also the vulnerable important persons to ensure that they are comfortable.
- A nurse is now assigned to provide care for all the pregnant evacuees.



## HEALTH

- The Chief Medical Officer of Health made the recommendation for teachers and students to be tested once per week and the testing of evacuees 24 hours before returning home.



## Coordination of the Regional Response Mechanism (RRM)

Updates from the World Food Programme (WFP)

### ARNOS VALE LOGISTICS HUB

To store and manage incoming relief supplies, WFP, together with the Caribbean Disaster Emergency Management Agency (CDEMA) and national counterparts, established a centralised logistics hub at the decommissioned Arnos Vale/E.T. Joshua Airport for receipt, repacking and onward transport of incoming relief supplies. WFP supports the National Emergency Management Organisation (NEMO) in the provision of shunting and handling services moving relief cargo in shipping containers from the Campden Park and Kingstown ports to the Logistics hub. The hub became operational with the first cargo received on 24 April.



**2,080 m<sup>2</sup>**  
STORAGE CAPACITY  
AVAILABLE



**8**  
MOBILE  
STORAGE UNITS



**10**  
GENERATORS



**4**  
PREFABRICATED  
OFFICES



**5**  
TRUCKS (1x7MT,  
1x3MT,  
3xpickups)



**2**  
FORKLIFTS (3T)



SPARE PARTS  
AND  
ASSOCIATED  
SAFETY GEAR



**47 MT**  
OF EQUIPMENT  
TRANSPORTED  
BY SEA AND AIR



LAUNCH OF THE CDEMA LOGISTICS SYSTEM (CLS)  
to support oversight and accountability when  
matching population needs with relief items



**USD 620k**  
TOTAL VALUE OF  
WFP MOBILIZED  
EQUIPMENT

### SHOCK RESPONSIVE SOCIAL PROTECTION

WFP designed the Soufrière Relief Grant to leverage existing systems to provide cash transfers to persons impacted by the disaster. The programme is implemented in partnership with the Ministry of National Mobilization, which oversees regular social protection programming. Data collected on impacted persons will inform broader relief support and social assistance from the government, WFP and others. Cash transfers provide recipients with flexibility to prioritize what they need most.



**12,000-15,000**  
IMPACTED PERSONS AIMED  
TO BE ASSISTED THROUGH  
CASH TRANSFERS



DATA COLLECTION PROCESSES ARE BEING USED  
TO REGISTER HOUSEHOLDS, WHICH PROVIDES  
AN OPPORTUNITY TO FURTHER STRENGTHEN  
SOCIAL SYSTEMS IN THE FUTURE



TO RAPIDLY MEET NEEDS IN THE DAYS FOLLOWING THE ERUPTION, WFP AND THE MINISTRY OF NATIONAL MOBILIZATION PROVIDED A TOTAL OF USD 5,600 IN SUPERMARKET VOUCHERS TO 257 PERSONS TO MEET THEIR ESSENTIAL NEEDS, WHILE OTHER FOOD ASSISTANCE WAS SCALED UP IN SHELTERS AND TO PEOPLE IN PRIVATE RESIDENCES

## Coordination of the Regional Response Mechanism (RRM)

Updates from the World Food Programme (WFP)

### DIGITALIZATION OF DATA COLLECTION SYSTEMS

WFP is supporting the Ministry of National Mobilization with a verification and assessment of persons staying in private residences to provide a more detailed understanding of needs and vulnerabilities and to facilitate the targeting of assistance. WFP developed and coded a digital data collection tool and will continue to support the Ministry to digitalize business processes.



**55** MINISTRY OF EDUCATION  
ENUMERATORS AND SUPERVISORS  
TRAINED TO DIGITALIZE DATA ON  
PERSONS IN SHELTERS

**23** CALL CENTER STAFF TRAINED ON  
THE DIGITAL REGISTRATION FORM

**78** ENUMERATORS FROM THE  
COUNTRY'S FLAGSHIP YOUTH  
EMPOWERMENT SERVICE (YES)  
PROGRAMME & **16** SUPERVISORS  
TRAINED ON DATA COLLECTION AND  
THE HOUSEHOLD VERIFICATION TOOL  
AND PROCESS



**50** TABLETS, **10** LAPTOPS AND **17** PHONES  
DONATED TO MINISTRY OF NATIONAL  
MOBILISATION TO SUPPORT THE  
REGISTRATION AND ASSESSMENT

**85** TABLETS DONATED TO MINISTRY OF  
EDUCATION TO EQUIP SHELTER MANAGERS TO  
TRACK EVACUEES LEAVING SHELTERS AND  
ENHANCE DATA MANAGEMENT



SUPPORT TO CLEANING DATA FROM SHELTERS  
AND PRIVATE HOMES TO CREATE AN OVERALL  
NATIONAL EVACUEE REGISTER AND A DATA  
VISUALIZATION DASHBOARD



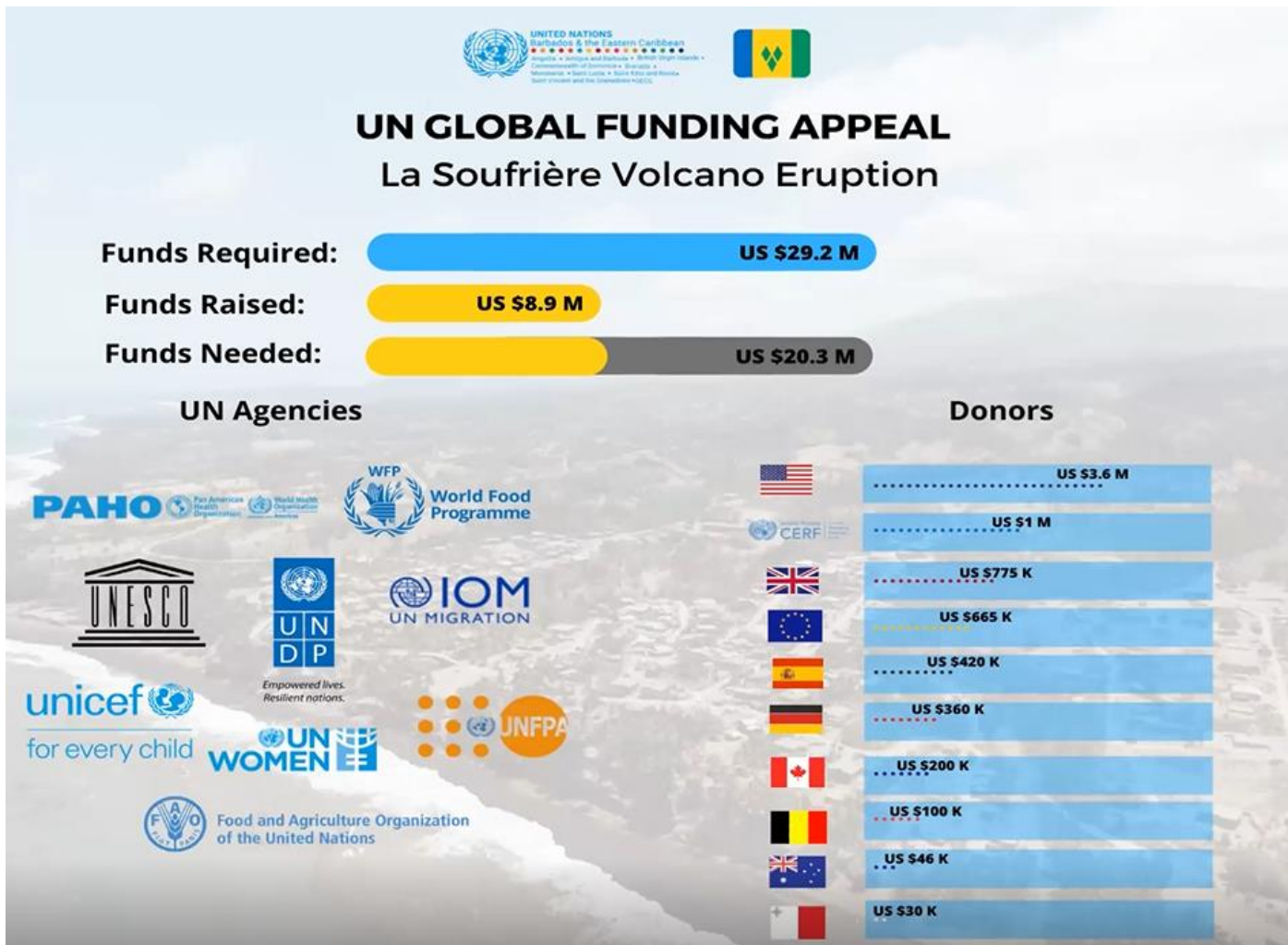
### FINANCING

USAID/BHA provides an additional \$3.8 million in FY 2021 funding to support the humanitarian response, bolstering delivery of food, health, logistics, and WASH assistance and bringing total USAID/BHA contributions to nearly \$4.7 million to date. Total USAID Humanitarian Funding for the Saint Vincent and the Grenadines Response in FY 2021 \$4,023,826.



## Coordination of the Regional Response Mechanism (RRM)

- The Caribbean Development Partner Group met on Thursday, May 20th and were presented with the main findings and recommendations of the Detailed Damage Sectoral Assessment Report, which is being finalised to be handed over to the Government of St. Vincent and Development Partners.
- The next CPDG meeting will be convened on May Thursday, May 27th.
- The United Nations coordinated a Global Funding Appeal in support of the La Soufrière eruption in St. Vincent, the progress thus far of which is seen in the figure below:



## List of preparatory actions being undertaken by RRM and other Partners



### **DONATIONS** *(monetary donations rather than relief supplies are encouraged at this time)*

The Office of the Prime Minister of St. Vincent and the Grenadines has provided banking information for donations to be made for disaster relief.

For further credit to:

**Bank of America**  
**SWIFT Code:** BOFAUS3M

**Name:** Government of St. Vincent and the Grenadines  
Accountant General - Disaster Relief Fund

**Bank of New York**  
**SWIFT Code:** IRVTUS3N

**Bank:** Bank of St. Vincent and the Grenadines  
**Address:** Bedford Street, Kingstown, St. Vincent and the Grenadines  
**Account No.:** 137741  
**Swift Code:** NCBVVC22

Donations may also be given through CDEMA La Soufriere Donation Facility via the banking details below:

#### Company Name and Address

CARIBBEAN DISASTER EMERGENCY  
MANAGEMENT AGENCY (CDEMA)  
Address: Resilience Way, Lower Estate,  
St. Michael, Barbados, West Indies

#### For persons outside of Barbados:

**Intermediary Bank:** Wells Fargo Bank, NA  
**SWIFT Code:** PNBUS3NNYC  
**ABA Routing #:** 026 005 092  
**Account Number:** 2000192003913  
**Bank Address:** 11 Penn Plaza, 4th Floor, New York, NY

#### For persons in Barbados:

**Beneficiary Bank:** CIBC FirstCaribbean International Bank  
**Bank Address:** Warrens, St. Michael, Barbados  
**Swift Code:** FCIBBBBB  
**Name of Beneficiary:** CDEMA La Soufriere Relief  
**Account Number:** 1001206239  
**Currency of Account:** BARBADOS DOLLARS

**Beneficiary Bank:** CIBC FirstCaribbean International Bank  
**Bank Address:** Warrens, St. Michael, Barbados  
**Swift Code:** FCIBBBBB  
**Name of Beneficiary:** CDEMA La Soufriere Relief  
**Account Number:** 1001206240  
**Currency of Account:** UNITED STATES DOLLARS